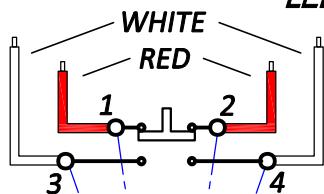


WR5276 SERIES

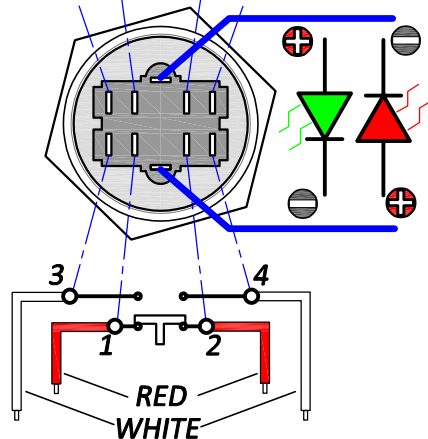
HEAVY DUTY WEATHERPROOF PUSHBUTTONS

- WR5276-HD28** ALTERNATE ACTION
WR5276-HD28XLRG ALTERNATE ACTION WITH BI-COLOR LIGHTED RING
WR5276-HD29 MOMENTARY ACTION
WR5276-HD29XLRG MOMENTARY ACTION WITH BI-COLOR LIGHTED RING

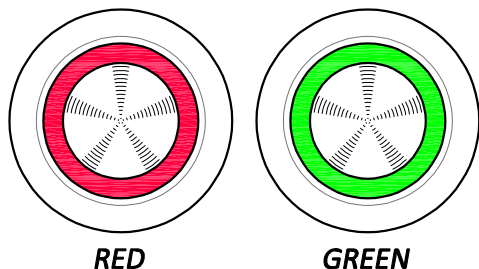
LED REQUIRES 24 VDC



REVERSE
POLARITY TO
CHANGE LED
COLOR



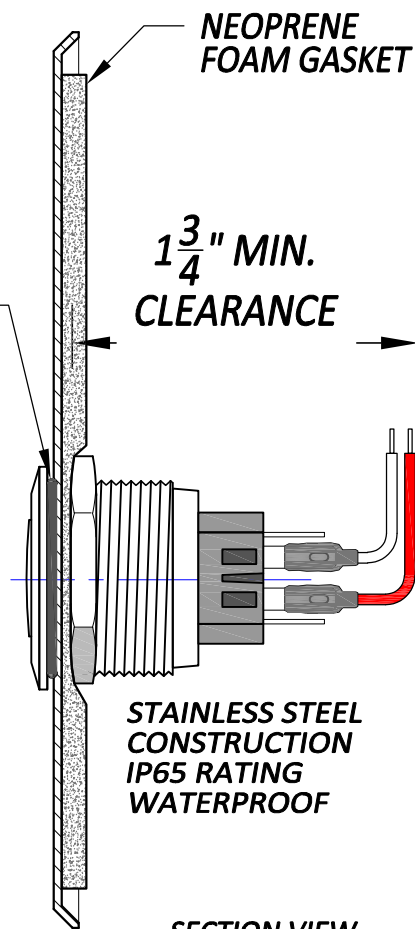
ILLUMINATED RING INDICATOR



RED

GREEN

SEALING
O-RING

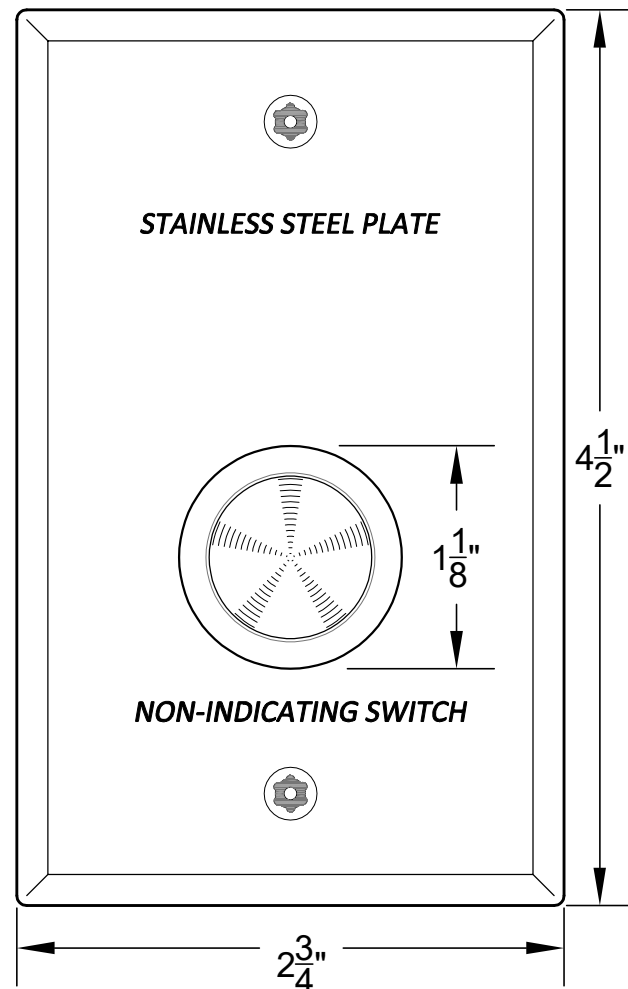


SECTION VIEW

NEOPRENE
FOAM GASKET

1 3/4" MIN.
CLEARANCE

STAINLESS STEEL
CONSTRUCTION
IP65 RATING
WATERPROOF



STAINLESS STEEL PLATE

NON-INDICATING SWITCH

ENGRAVING OPTIONS:

- XE1 - "PUSH TO EXIT"
 XE2 - "PANIC"
 XE3 - "EMERGENCY RELEASE"
 XE4 - "PUSH TO RELEASE"
 XE5 - "EMERGENCY DOOR RELEASE"
 XE6 - CUSTOM ENGRAVING

CONTACT RATING:
 2 AMPS @ 24 VDC
 2 AMPS @ 120 VAC
 1 AMP @ 220 VAC

LED RATING:
 24 Volts DC
 PEAK CURRENT 120 mA
 OPERATING CURRENT < 20 mA

REV-A LEAD NUMBERS CHANGED 1/6/17
 REV-B 1&2 CONTACTS BOTH N.C. 11/4/17

WR5276 SERIES MOUNTING.DWG

PAGE 1 OF 2

WR5276-SERIES

DATE:
6/11/13

BY:
JFH

HEAVY DUTY WEATHERPROOF
 STAINLESS STEEL SWITCH



DORTRONICS
 SYSTEMS, INC.
 SAG HARBOR, NY
 800-906-0137

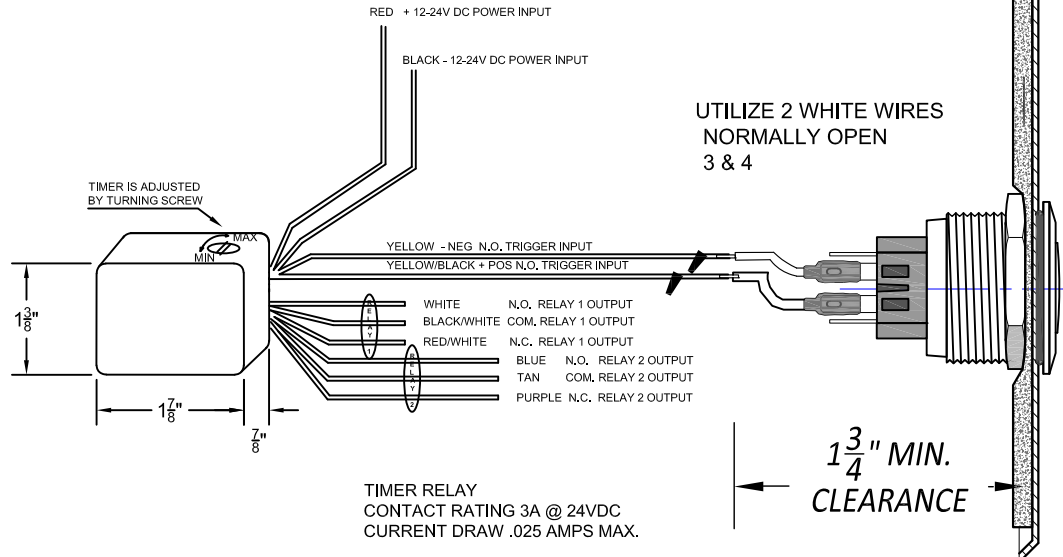
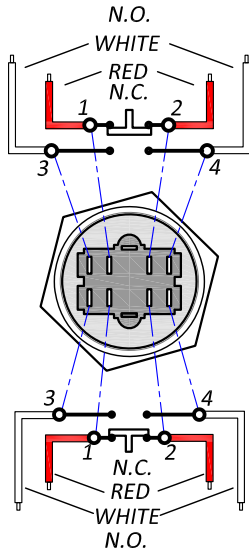
Made in the
USA

WR5276-HD29 SERIES PUSH BUTTONS WITH AT or FT TIMER

DPDT 1-60 SECOND TIMER MODULE

ENCLOSED UNIT FOR PUSH BUTTON ELECTRONIC TIME DELAY
GRAY ABS PLASTIC ENCLOSURE
8" FLYING LEADS TO CONNECT TO ACCESSORY DEVICES, OR
CONTROLLERS. UNIT IS DESIGNED TO FIT INTO A ONE GANG
ELECTRICAL BOX WITH THE ASSOCIATED SWITCH ASSEMBLY.

ADJUSTABLE (xAT)
FIXED 30 SECOND (xFT)



REV
REV

5200 SERIES MOUNTING.DWG

PAGE 1 OF 1

5200-SERIES XAT/FT

DATE:
5/10/23

BY:
J.T.F.

WR5276-HD29 PUSH BUTTON & AT TIMER



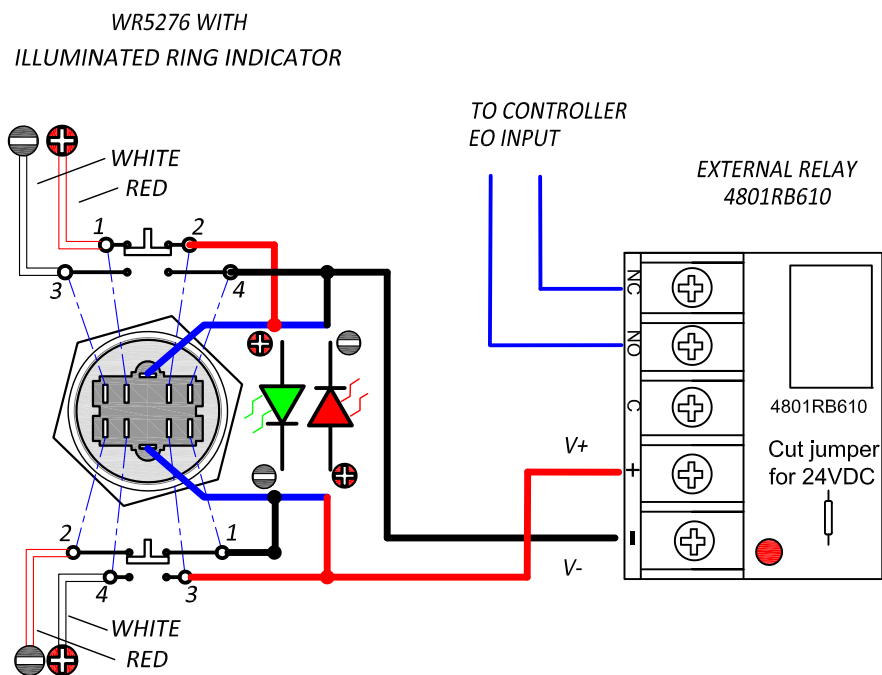
DORTRONICS
SYSTEMS, INC.
SAG HARBOR, NY
800-906-0137



WR5276-HD28XLRG

BI COLOR LED WIRING WITH EXTERNAL RELAY

LED is Green for normal operation
Red when the button is activated.
To instead have a Red LED for normal operation
switch the V+ and V- wires on the relay
Requires external 24VDC relay SPDT
Dortronics part# 4801RB610



REV 1-30-23

SPDT RELAY
RATED 10 Amps @ 24VDC
CURRENT DRAW 50 mA
Red LED Indicates relay is triggered

Also Available 6 per board 6" x 3.2" x .75"
Part#4806RB610



DORTRONICS SYSTEMS, INC.

1668 Sag Harbor Tpke., Sag Harbor, NY 11963 (800) 906-0137 (631) 725-8148 Fax www.dortronics.com