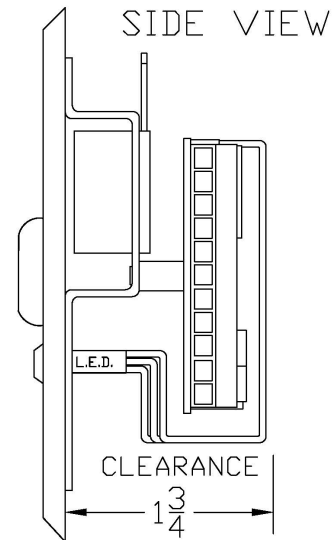
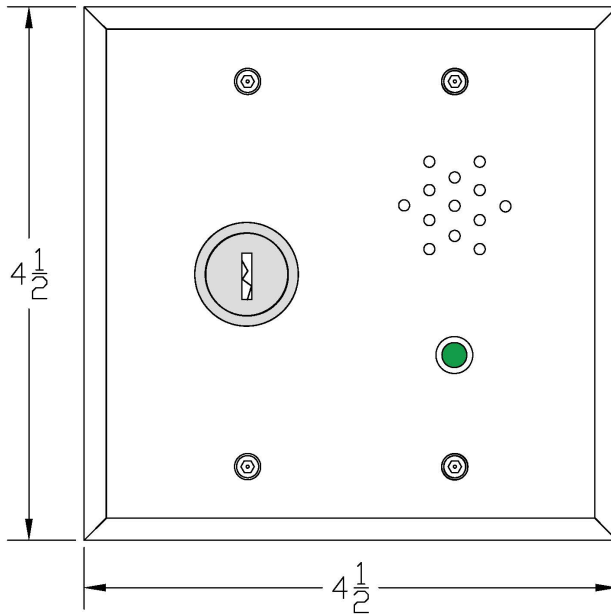




7281-EAXK332

MOUNTING INSTRUCTIONS



7281-EA-K332 Door Alarm Module on a 2-gang stainless steel plate with LED and sounder. Includes electrical key switch with DPDT maintained contacts, The key is removable in both positions.

7281-EA Door Prop Alarm Operation

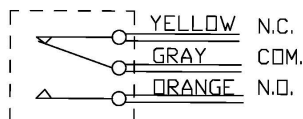
The LED is green and relay is energized with power ON and door closed. Opening the door starts the timing period via the connection to the Door Position Switch. If the door is closed prior to the expiration of the time delay the system remains in idle mode. If the door has not closed before the time delay ends, then the LED turns RED, the sounder is activated and the relay is de-energized. The second set of relay contacts can be used to signal an independent system.

Key Reset & Alarm Shunt

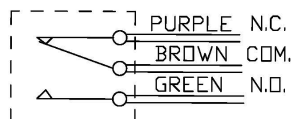
The onboard key switch can be used to inhibit the automatic reset on door close requiring a manual reset by key.

DPDT- K332 KEY REMOVABLE IN 2 POSITIONS

(1 SET OF CONTACTS SHOWN)



(2ND SET OF CONTACTS SHOWN)



SPECS:

SWITCH RATING:

3A @ 115VAC OR 28VDC

UL RECOGNIZED/CSA CERTIFIED

OPERATING TEMP: +5F - +158F

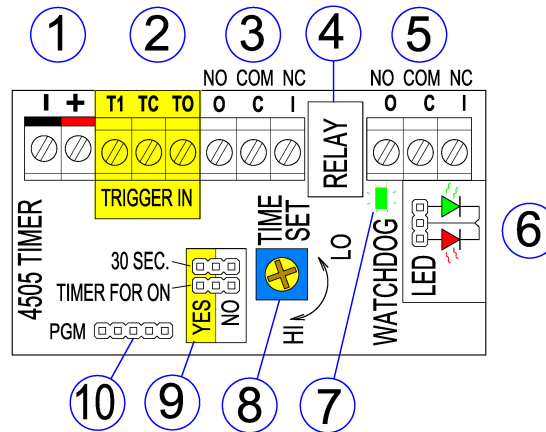
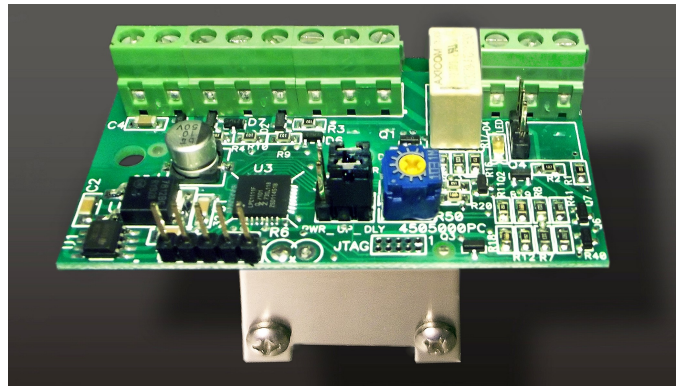


ADJUSTABLE TIMER INTRUCTIONS

The 7281-EA utilizes the 4505 processor controlled timer module which may be used as a highly accurate 30 second fixed timer or by removing a jumper, may be adjusted to provide endlessly variable time settings from 1 to 60 seconds. It features separate trigger inputs for either normally open or normally closed contacts.

Bi-color LEDs may be wired directly to a powered connector for remote indication of timer status.

Delay on power-up is selectable by jumper.



- | | | | | | |
|---|---------------|---|--------------|----|--------------|
| 1 | Power Input | 5 | Output 2 | 9 | Jumper Array |
| 2 | Trigger Input | 6 | LED Header | 10 | PGM Port |
| 3 | Output 1 | 7 | Watchdog LED | | |
| 4 | DPDT Relay | 8 | Time Adjust | | |

POWER INPUT (1)

The 4505 requires 12 – 24 VDC. The 4505 can be configured to trigger on power up. See Jumper Array (9) below. This feature is often used to add a timed unlock period to an existing lock when only power connections are available at the door.

TRIGGER INPUT (2)

The timer trigger can be either a normally closed or a normally open contact. An input is provided for both. To use a normally open contact, the normally closed trigger should be tied to common. Do not apply voltage to the trigger inputs, Use dry contacts only.

The relay de-energizes when a trigger is detected. The timing sequence begins when the trigger is removed.

The 4505 is designed for Fail Safe operation. **The relay is not energized when the timer is running.** Fail secure operation is available as an option.

OUTPUT ONE (3)

There are two sets of DPDT relay contact sets available as timer outputs. Output One with a common, a normally closed and a normally open contact using standard terminal strip for connection is also available with a 3 pin header as an option.

DPDT OUTPUT RELAY (4)

The output relay contacts are rated for 2 Amps at 30 VDC.

OUTPUT TWO (5)

The second set of relay contacts (common normally closed and normally open) is available as a standard three-position terminal strip.

LED OUTPUT (6)

A powered output is available for direct connection to a bi-color LED (or a pair of discrete LEDs). The output changes state when the relay is energized. Most users connect a bi-color LED to the header such that RED is illuminated when the relay is not energized and GREEN is energized when the relay is energized. Since the center pin is common, to reverse the color order, merely rotate the orientation of the plug.

WATCHDOG LED (7)

The 4505 timer is controlled by a microprocessor. A watchdog circuit monitors the operation of the microprocessor and blinks at a steady rate (about 3 times per second) when the processor is operating correctly. This provides a continual visual indication that the system is operational.

If the Watchdog Circuit stops blinking at a constant rate, contact Dortronics Technical Help.

Always use transient voltage protection on the outputs when connecting an inductive load. Kickback (back EMF) from a coil can destroy relay contacts and may damage the electronics. Transient Voltage Suppression (TVS) diodes are available from Dortronics for \$1.00 ea. Part # 1200036. Connection of an inductive load without protection will void the warrantee.

TIME DELAY ADJUST (8)

The 4505 timer delay period can be adjusted from 1 to 60 seconds by means of a rotary control. Use a small screw driver to increase the delay time by turning the control clockwise or decrease the delay time by rotating the control counter-clockwise. Longer time delays may be custom programmed at the factory for a additional cost.

JUMPERS FOR: 30 SECOND FIXED DELAY AND DELAY ON POWER-UP (9)

The 4505 timer delay period can be accurately set at thirty seconds by moving the top fixed delay jumper to the left two pins. See the diagram above. The 30 second delay has the accuracy of a computer and is not affected by barometric pressure or changes in the ambient temperature.

For the timer to trigger on power up, move the lower jumper to the left two pins. This is a useful function for retrofitting a timed relock delay to existing door locks wired for power only with no control wiring available. When the power circuit is briefly interrupted (usually by a momentary pushbutton in series with the lock) the system goes immediately into the timer function as soon as the power is restored. This converts an existing momentary release switch into either a fixed 30 second door release or an adjustable release (from 1 to 60 seconds).

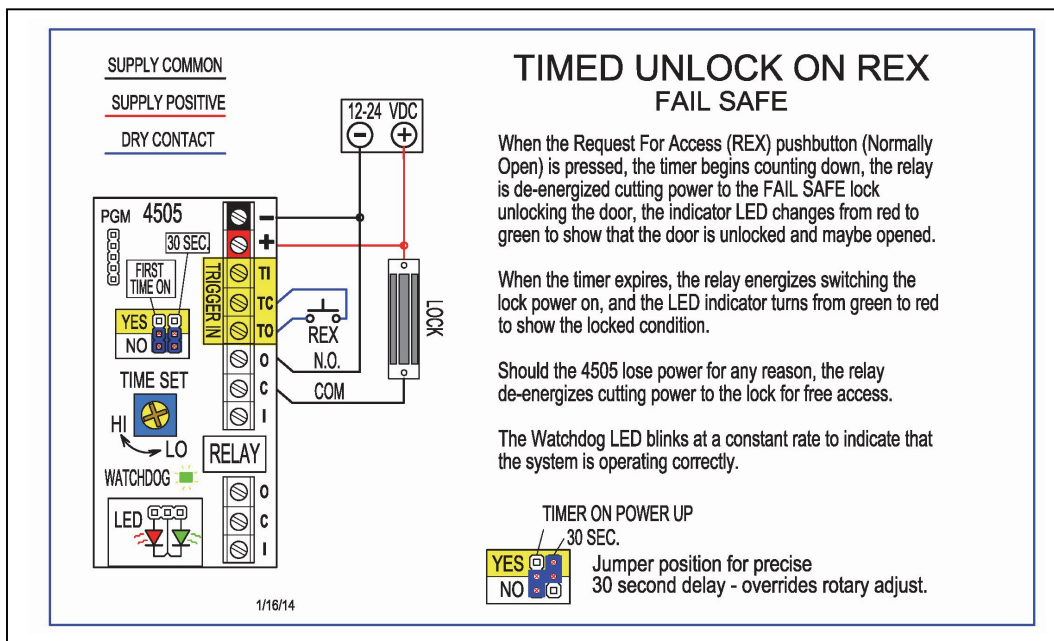
PROGRAMMING PORT (10)

The 4505 can be customized at the factory for non-standard applications. The time delay range can be increased by seconds, minutes or even hours for a small additional programming charge. Other custom features will be quoted on the basis of customer specifications.

SPECIFICATIONS:

POWER INPUT:	12 – 24 VDC
TIMER RANGE:	1 – 60 SECONDS
FIXED TIME:	30 SEC
RELAY CONTACT RATING:	2 Amp @ 30 VDC Max.
SIZE:	2 ¾" X 1 ½" – Requires ¾" height clearance for connections
TRIGGER:	Normally Open and Normally Closed Trigger Inputs
OPERATION:	Output Relay is NOT energized during Timer Function
TRIGGER HOLD OVER:	Relay is energized on trigger, timer countdown begins at trigger release

TIMER SOLUTIONS:



SWITCH POWER TO TRIGGER RETRO FIT EXISTING LOCK

SUPPLY COMMON
SUPPLY POSITIVE
DRY CONTACT

1/16/14

To add a time delay for installations with an existing lock and a pushbutton used to cut power to the lock for access, where it is not practical to pull additional wiring, the timer may be connected in line with the existing lock power circuit.

Move the jumper to the position for time delay on power up (see illustration below) and adjust the delay control for the unlock time desired.

When the pushbutton is pressed cutting power to the lock and the timer, the door is unlocked. When the pushbutton is released and power is restored, the timer begins counting down and the door remains unlocked until the time delay expires.

The Watchdog LED blinks steadily to indicate correct operation.

TIMER ON POWER UP
30 SEC.

YES Jumper position for precise
NO 30 second delay - overrides rotary adjust.

DOOR PROPPED OPEN ALARM WITH MANUAL RESET

POWER SUPPLY COMMON
POWER SUPPLY POSITIVE
DRY CONTACT ONLY

Mar 24 2015

The system remains triggered in normal mode by the closed contacts of the door position switch. The door is closed. The sounder is silent. The LED indicator is green to show that the system is in normal mode. (Upon initial power up a Reset must first be initiated for normal operation)

When the door opens, the trigger is removed and the timer begins to count down. If the door is closed prior to the expiration of the timer, the system remains in normal mode.

If the door is still open when the timer expires, the system goes into alarm mode: the horn sounds; the indicator LED changes to red to show the alarm condition; and the relay de-energizes, interrupting the trigger circuit.

Closed contacts at the Reset Switch (usually a keyed switch) are required re-trigger the system, turn off the alarm and restore normal mode.

The Watchdog LED blinks at a constant rate to indicate that the system is operating correctly.

DOOR ALARM ON OPEN RESET ON CLOSE

SUPPLY COMMON
SUPPLY POSITIVE
DRY CONTACT

1/16/14

When the door opens, the Door Position Switch contacts open triggering the timer. The alarm sounds immediately. The status LED changes from green to red and the relay de-energizes causing the horn connected to the Normally Closed relay contacts to sound.

When the door closes, the trigger is removed. When the timer runs out the system returns to normal mode: the relay is de-energized, the status LED is green and the horn is silent.

Note: reverse the LED connector to change the color in Normal Mode

The Watchdog LED blinks at a constant rate to indicate that the system is operating correctly.

REMEMBER: when not triggered, the output relay is energized.



DORTRONICS SYSTEMS, INC.

1668 Sag Harbor Tpke., Sag Harbor, NY 11963 (800) 906-0137 (631) 725-8148 Fax www.dortronics.com

Product Warranties:

4500 Series Timers have a One Year Warranty against defects in material and workmanship. Defective units will be replaced or repaired based upon incoming evaluation and inspection.

All other Dortronics components of the Electric Locking System shall be similarly warranted for a period of one year. Expressed warranties are conditionally based on the requirement that the items covered within the guarantee are used and maintained in accordance with the manufacturer's recommendations.

A Return Authorization Number must be obtained and accompany all returns within 14 days of issue. Unused items returned for credit must be complete and packed in original unit box and are subject to a 15% restocking fee. Any shipping or order discrepancies must be reported within 5 days of receipt.

Dortronics Systems Inc. 800-906-0137 sales@dortronics.com www.dortronics.com