



6450 LEVER TRIM MOUNTING

The 6450 Lever Trim features a cut-out for a standard cylinder lock and can be adjusted for right hand or left hand rotation. It is available in satin aluminum or dark bronze finish. It is designed to work with the 6495 Rim Panic Device.

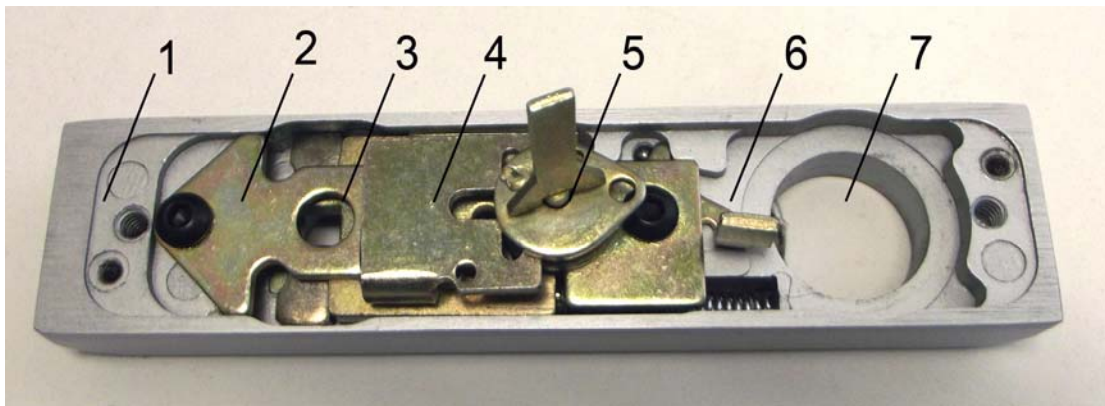


FIG. 1 MECHANISM

- | | | | |
|---|------------------------------|---|-----------------------------|
| 1 | Trim Housing | 5 | Actuating Tab |
| 2 | Lever Retaining Plate | 6 | Locking Tab |
| 3 | Lever Rotation Locking Plate | 7 | Opening for 1-1/8" Cylinder |
| 4 | Rotation Selector Plate | | |

LEVER ROTATION

The 6450 lever trim may be mounted with the mortise lock up or down on right handed or left handed doors. The rotation of the lever action must be adjusted to match the rotation of the 6495 bar latch retraction mechanism.

Remove the lever retaining screw and lock washer, then remove the lever to change the rotation.

The Lever Rotation Locking Plate (3) prevents changing the direction of rotation while in use. With the lever removed from the trim assembly, partially depress the Rotation Selector Plate (4) and guide the Actuating Tab (5) into the desired channel, either right or left. See Fig. 2.

Be sure the Locking Tab (6) is in the unlocked position (with the tab closest to the spring).

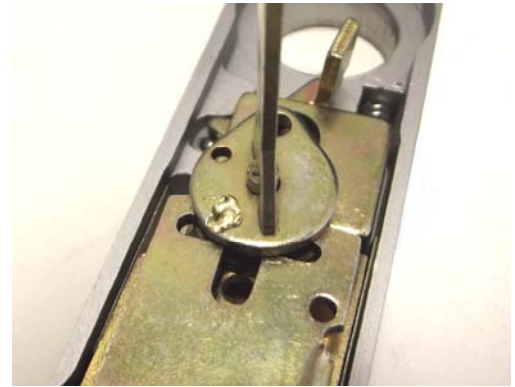


FIG. 2 ROTATION SELECTION PLATE



FIG. 3 TRIM ASSEMBLY

Reinstall the lever. Depress the Rotation Selector Plate (4) slightly to allow the rotation locking plate to clear the lever shaft bearing (3).

While holding the selector plate, insert the lever until it is fully seated. Install the lever retaining screw and the lock washer. Rotate the lever to verify that the rotation of the tab (5) is correct and the movement does not bind.

If the tab (5) does not rotate freely, or rotates incorrectly, remove the lever and make sure the tab is engaged in the correct slot (Fig. 2).

Hold the completed assembly in place with the tab engaged in the bolt mechanism. Verify that when the lever is rotated, the bolt retracts.

THE MORTISE CYLINDER

The mortise cylinder is retained by a square washer to prevent rotation and a threaded ring.

Install the barrel and square washer as shown above. Lock the assembly in place with the threaded ring. The threaded ring fits beneath the Locking Tab (6). Let the threaded ring draw the lock barrel into the trim housing

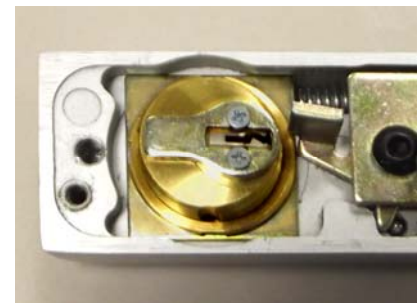


FIG. 4 CYLINDER



DOOR PREPARATION

Use the template supplied to mark the face of the door for drilling. Use a hole saw to cut out the ends of a pocket to receive the lever mechanism.

Scribe the sides of the pocket and cut along the scribed lines using a reciprocating saw or cut-off wheel.

Counter sink the lever trim mounting screw holes on the interior side of the door.

Using the template, mark, center punch, drill and tap the interior door rails for the 6495 Panic Bar. Note below how the lever trim key (1) must line up with and engage the latch retracting key-way (2).



FIG. 5 CUT OUT

The latch retraction mechanism at the top of the bar (facing the back of the bar) rotates clockwise. The bottom mechanism rotates counter-clockwise. Be sure that the lever rotation and orientation is correct for the installation. Adjust if needed, see above.

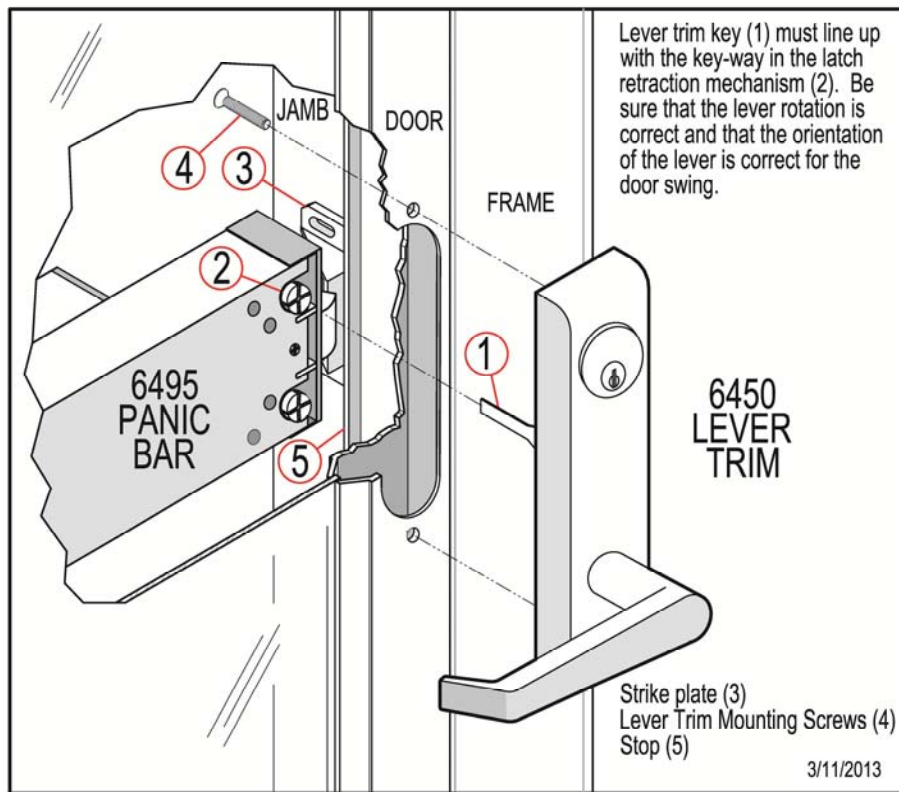


Fig. 6 EXPLODED VIEW

Product Warranties:

All electromagnetic locks have a **LIFETIME GUARANTEE** against defects in material and workmanship. Defective units will be replaced or repaired based upon incoming evaluation and inspection.

All other Dortronic components of the Electric Locking System shall be similarly warranted for a period of one year. Expressed warranties are conditionally based on the requirement that the items covered within the guarantee are used and maintained in accordance with the manufacturer's recommendations.

A Return Authorization Number must be obtained and accompany all returns within 14 days of issue. Unused items returned for credit must be complete and packed in original unit box and are subject to a 15% restocking fee. Any shipping or order discrepancies must be reported within 5 days of receipt.

Contact (Sales):

Mike Palermo – Sales/Customer Service

Stuart Arthur – Sales/Applications Specialist

Bryan Sanderford - National Sales Manager]

Contact (Technical):

Joe Hanna – Engineer/Applications Specialist

Contact (Credit):

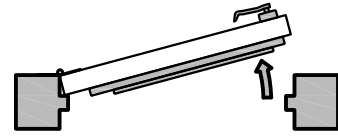
Teri Harboy – Accounting; New Customer Accounts

Dortronics Systems Inc. 800-906-0137 Fax 631-725-8148 www.dortronics.com

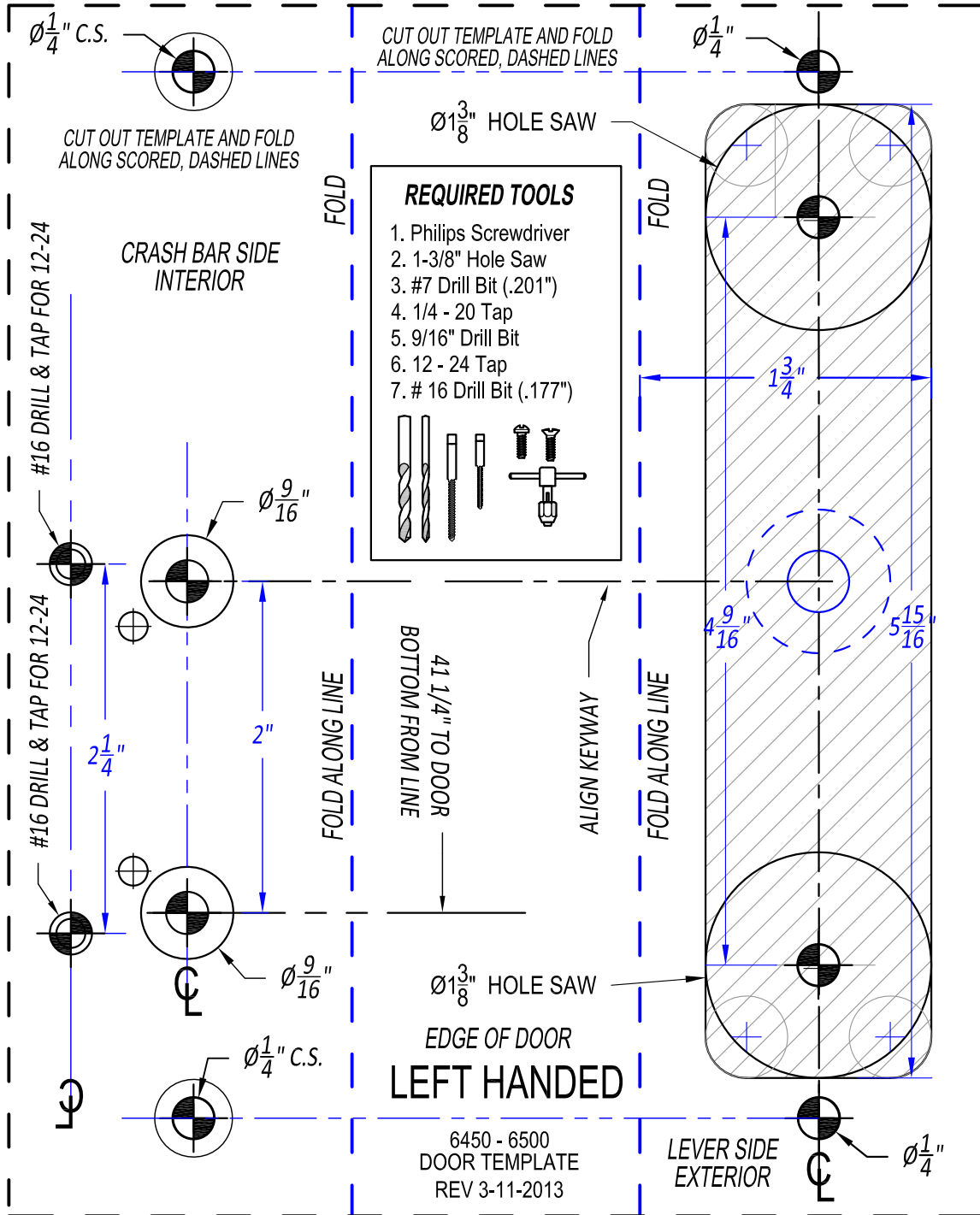
PRINT TO 100% SCALE & MEASURE TEMPLATE DIMENSIONS BEFORE DRILLING

DORTRONICS 6450-6495

LEVER TRIM -PANIC BAR



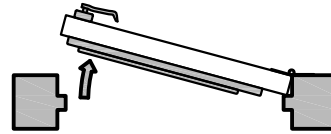
LEFT HANDED



PRINT TO 100% SCALE & MEASURE TEMPLATE DIMENSIONS BEFORE DRILLING

DORTRONICS 6450-6495

LEVER TRIM -PANIC BAR



RIGHT HANDED

