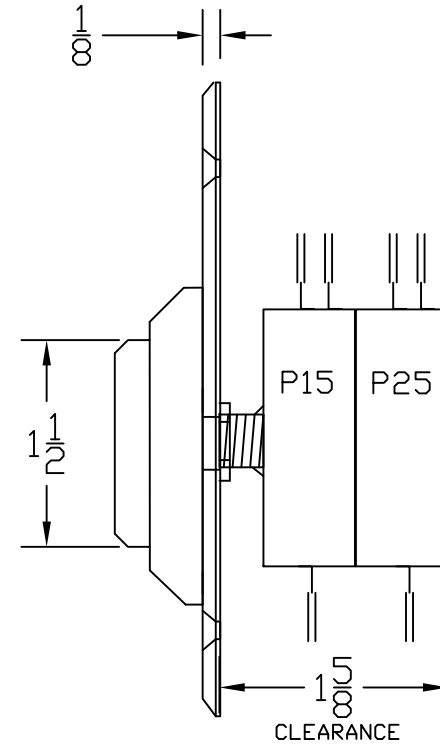
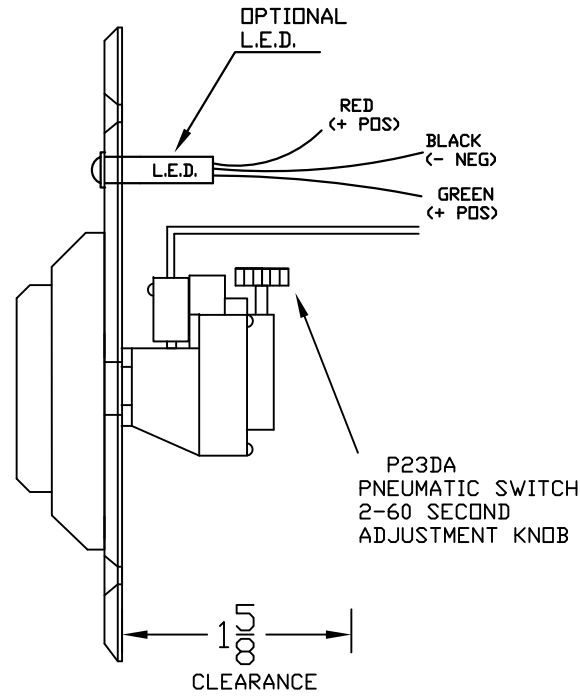
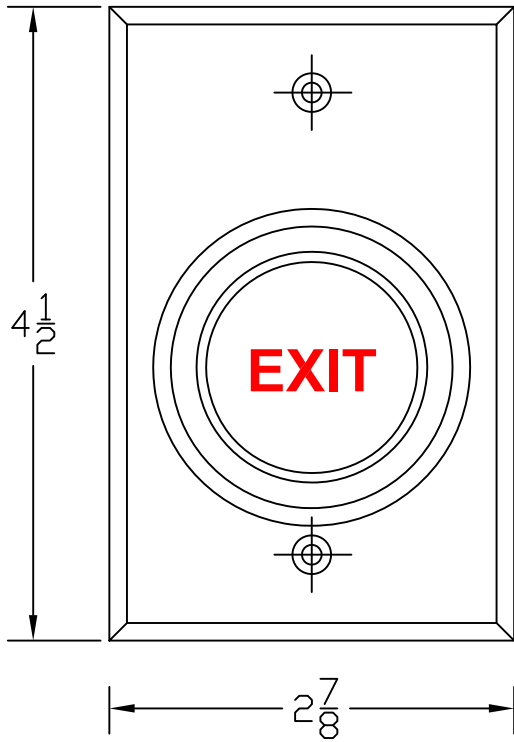
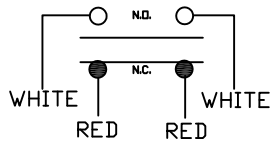


W5287 SERIES HEAVY DUTY BUTTONS

REV. NC

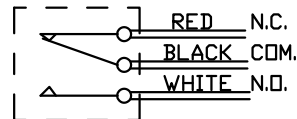


PNEUMATIC DPST P23DA



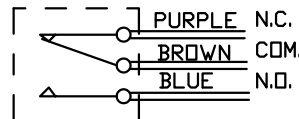
MOMENTARY SPDT P15

(1 SET OF CONTACTS SHOWN)

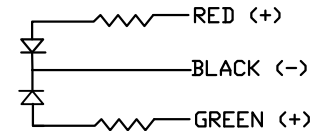


MOMENTARY DPDT- P25

(2ND SET OF CONTACTS SHOWN)



L.E.D. OPTION



L.E.D. RATING: .02A @24VDC

SPECS:

SWITCH RATINGS:

PNEUMATIC DELAY P23DA
10A @ 115VAC OR 28VDC

MOMENTARY P15-P25
4A @ 115VAC OR 28VDC

UL RECOGNIZED/CSA CERTIFIED

OPERATING TEMP: +5F - +158F

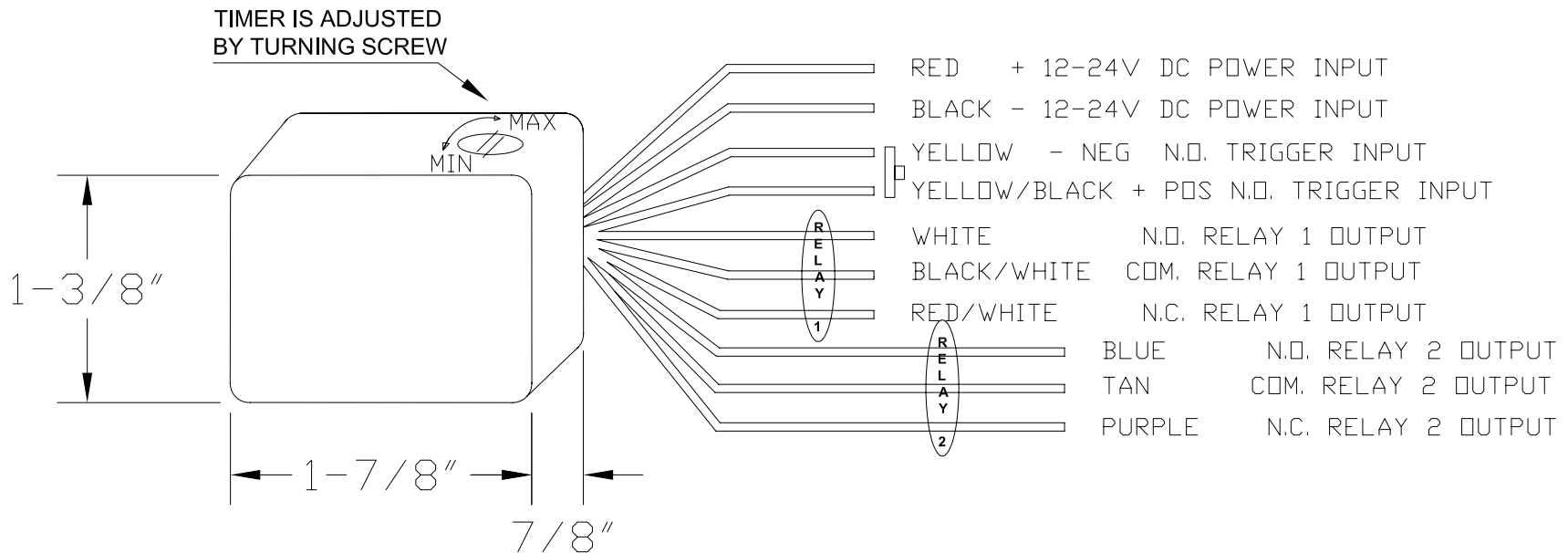
W5286 SERIES HEAVY DUTY VANDAL RESISTANT BUTTON				
MATERIAL ALUMINUM		CAD FILE W5287-MOUNTING		
FINISH CLEAR ANODIZE		SHEET 1 OF 1		SIZE A
DRAWN JTF	DATE 11/19/04	SCALE TO FIT	DWG. NO. W5287-MOUNTING	
APPR. XXX	DATE XX/XX/XX	UNITS INCHES		

DPDT 1-60 SECOND TIMER MODULE

ENCLOSED UNIT FOR PUSH BUTTON ELECTRONIC TIME DELAY
 GRAY ABS PLASTIC ENCLOSURE
 8" FLYING LEADS TO CONNECT TO ACCESSORY DEVICES, OR
 CONTROLLERS. UNIT IS DESIGNED TO FIT INTO A ONE GANG
 ELECTRICAL BOX WITH THE ASSOCIATED SWITCH ASSEMBLY.

ADJUSTABLE (xAT)
 FIXED 30 SECOND (xFT)

CONTACT RATING 3A @ 24VDC
 CURRENT DRAW .025 AMPS MAX.



TITLE DPDT TIME DELAY MODULE				
MATERIAL XXX			CAD FILE 52800AT-06	
FINISH XXX			SHEET 1 OF 1	SIZE A
DRAWN JTF	DATE 1/31/06	SCALE TO FIT	DWG. NO.	REV.
APPR. XXX	DATE XX/XX/XX	UNITS INCHES	52800AT-06	A

REV	REVISION DESCRIPTION	DATE