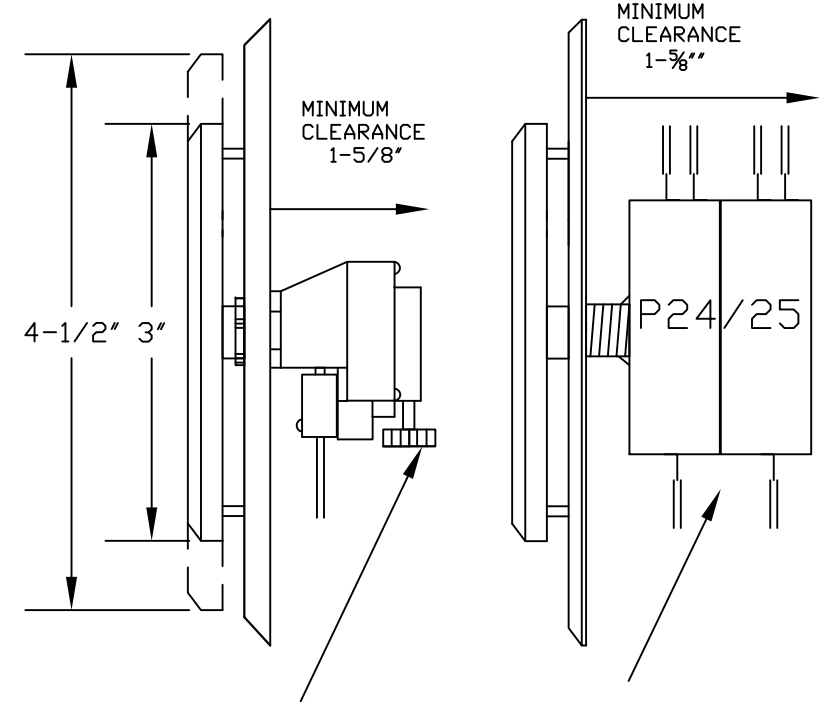
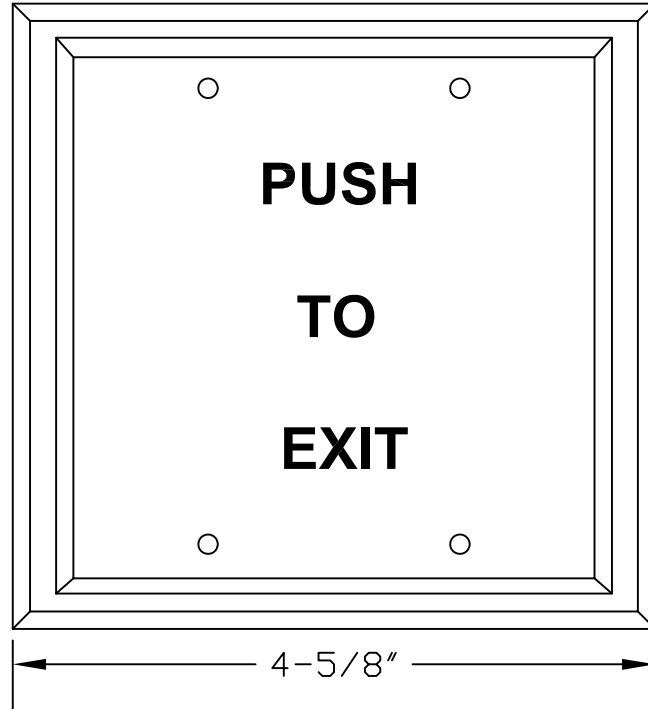
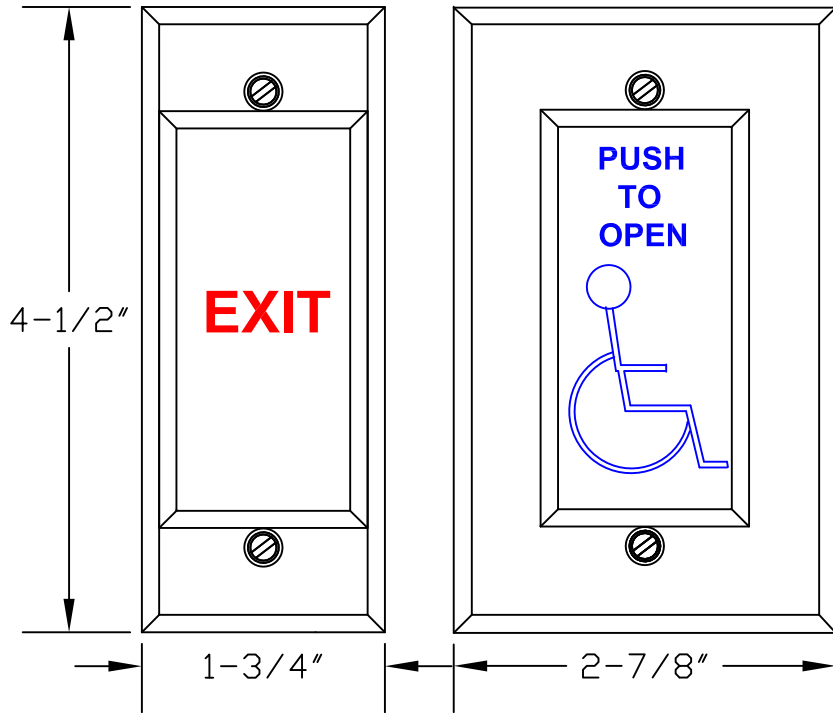


5286 SERIES INSTRUCTIONS

N5286

W5286

D5286



MOUNT WITH 2 SCREWS PROVIDED
TO 1 GANG UL LISTED/RECOGNIZED
ELECTRICAL BACK BOX

THE "D" SERIES MOUNTING SCREWS
ARE CAPTIVATED AND ARE ACCESSED
WITH THE HEX KEY PROVIDED

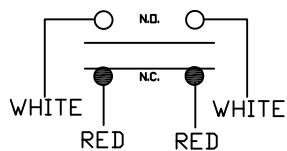
PNEUMATIC SWITCH
ROTATE ADJUSTMENT
KNOB FROM 2-60
SECONDS

DPDT SWITCH

OPTIONAL ENGRAVING:

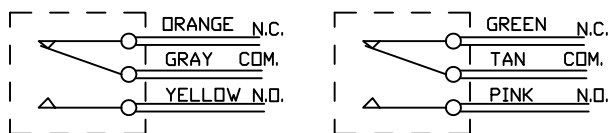
- XE1= PUSH TO EXIT (BLACK TEXT)
- XE1R= PUSH TO EXIT (RED TEXT)
- XE3= EXIT (RED TEXT)
- XE4= DOOR RELEASE (BLACK TEXT)
- XE5= EMERGENCY DOOR RELEASE (RED TEXT)
- XE6= CUSTOM ENGRAVE
- XHCP=HANDICAP
- XHCP2=HANDICAP "PUSH TO OPEN"

PNEUMATIC DELAY
-P23DA

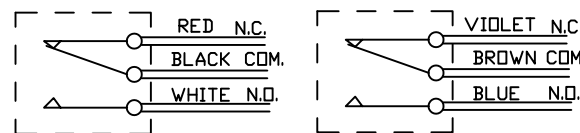


SPECS:
P24-P25 CONTACT RATING:
2 AMPS MAX @ 24VDC
3AMPS @250VAC
6AMPS @120VAC
(P23DA ONLY)
10 AMPS(resistive)@240VAC

P24 DPDT MAINTAINED SWITCH



P25 DPDT MOMENTARY SWITCH



PUSH PLATE: 5/16" THICK ALUMINUM
BACK PLATE: 1/8" THICK ALUMINUM

PART#52860
REV#001C
9/8/10

5286 SERIES
PUSH PAD SWITCH ASSEMBLY

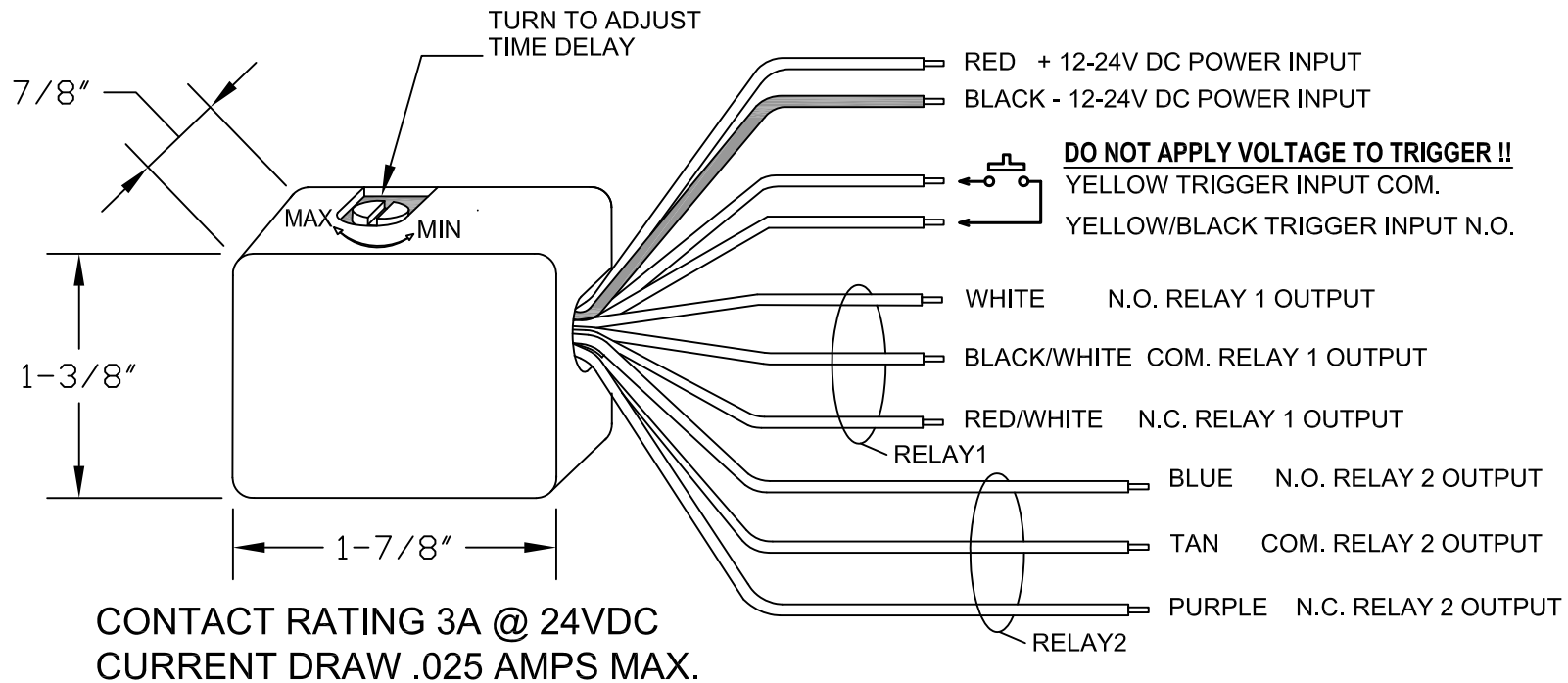


DORTRONICS
SYSTEMS, INC.
SAG HARBOR, NY
800-906-0137

DPDT 1-60 SECOND TIMER MODULE

ENCLOSED UNIT FOR PUSH BUTTON ELECTRONIC TIME DELAY
 GRAY ABS PLASTIC ENCLOSURE
 8" FLYING LEADS TO CONNECT TO ACCESSORY DEVICES, OR
 CONTROLLERS. UNIT IS DESIGNED TO FIT INTO A ONE GANG
 ELECTRICAL BOX WITH THE ASSOCIATED SWITCH ASSEMBLY.

ADJUSTABLE (xAT)
 FIXED 30 SECOND (xFT)



REV	REVISION DESCRIPTION	DATE

TITLE DPDT TIME DELAY MODULE				
MATERIAL XXX		CAD FILE 52800AT-06		
FINISH XXX		SHEET 1 OF 1		SIZE A
DRAWN JFH	DATE 3/25/10	SCALE TO FIT	DWG. NO.	REV.
APPR. XXX	DATE XX/XX/XX	UNITS INCHES	52800AT-06	A