

# 1107xEDR DELAYED EGRESS ACTUATING LOCK

**NFPA 101 / BOCA  
Compatible**

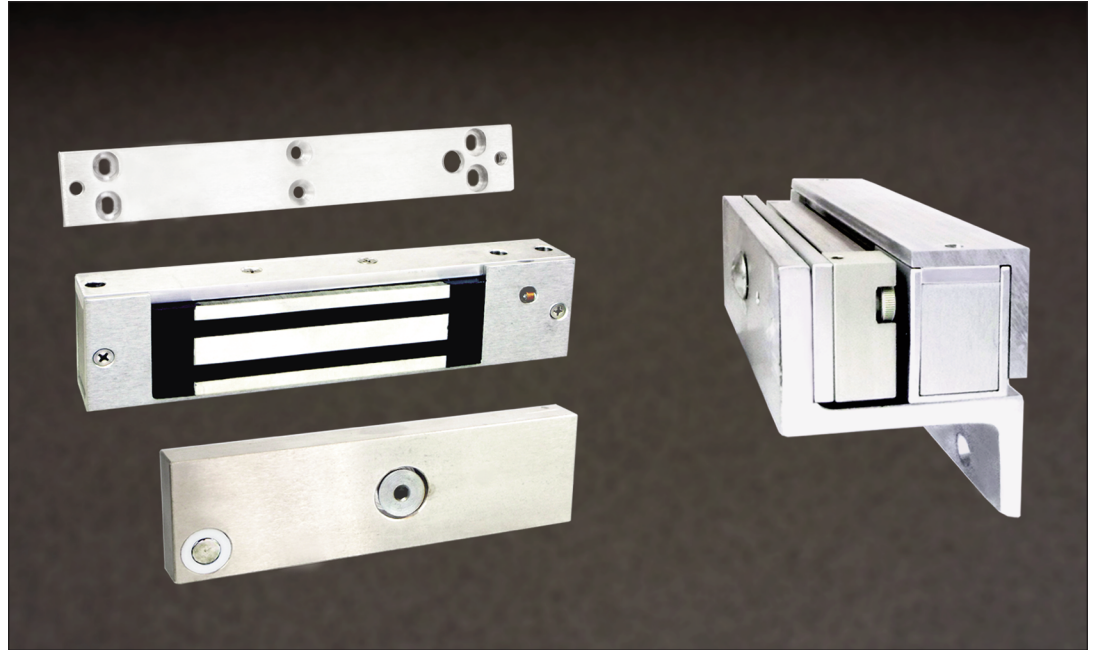
**600 Pounds of  
Holding Force**

**Shallow 2-1/4"  
Mounting Profile**

**Efficient-Low  
Current Draw**

**Certified to  
UL294  
for Access Control**

**Made in USA**



## **Delayed Egress Activation:**

Designed for use with the 7101-P Delayed Egress Panel, the 1107xEDR employs a Microswitch actuator which senses door movement via the spring loaded Armature. The Microswitch sensitivity is field adjustable to accommodate various applications. A concealed Door Position Switch is also included and utilized to report door status for Re-lock and Forced door conditions to the Egress Panel

## **Reliable & Versatile:**

This state of the art electromagnetic locking device provides positive, instantaneous door control. Models available for single outswing, inswing, and sliding doors or gates. Filler plates, angle brackets, and other mounting adapters are available to accommodate a wide range of door and frame types and conditions.

## **NFPA Life Safety Compatible:**

As electromagnetic locking devices function independently of mechanical locks. Magnetic locks are ideal for use with fire and hazard detection systems to provide unobstructed egress and are highly recommended for use on Exit Door Control Systems requiring delayed releasing, per NFPA 101 or BOCA Codes.

## **Safe Operation:**

All 1107xEDR electromagnetic locking devices are inherently fail-safe, releasing instantly upon command or loss of power. Both locking and unlocking are accomplished with ease and efficiency.

The well confined magnetic field of these locks allow them to be used in computer rooms and other electronically sensitive areas. The built-in Transient Surge suppression protects the electro-magnet from noise and voltage spikes.

## **System Compatibility:**

Although the 1107xEDR Maglocks were designed to work with the Dortronics 7101-P they will work reliably with most Delayed Egress controllers as well as other security alarm and access control systems.

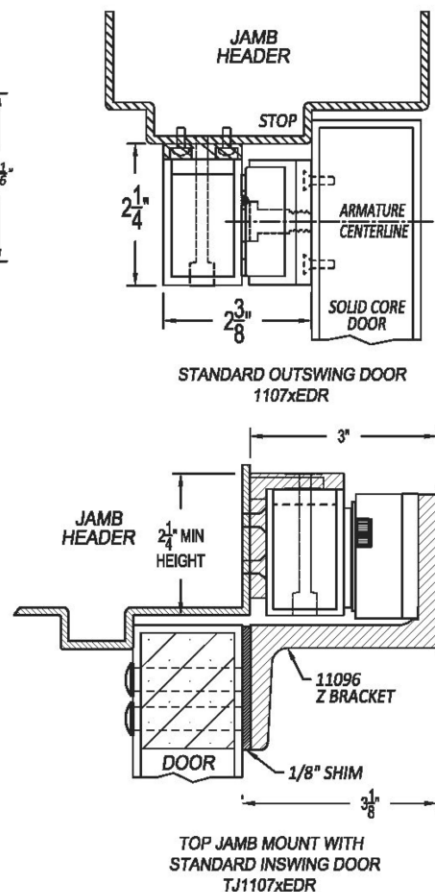
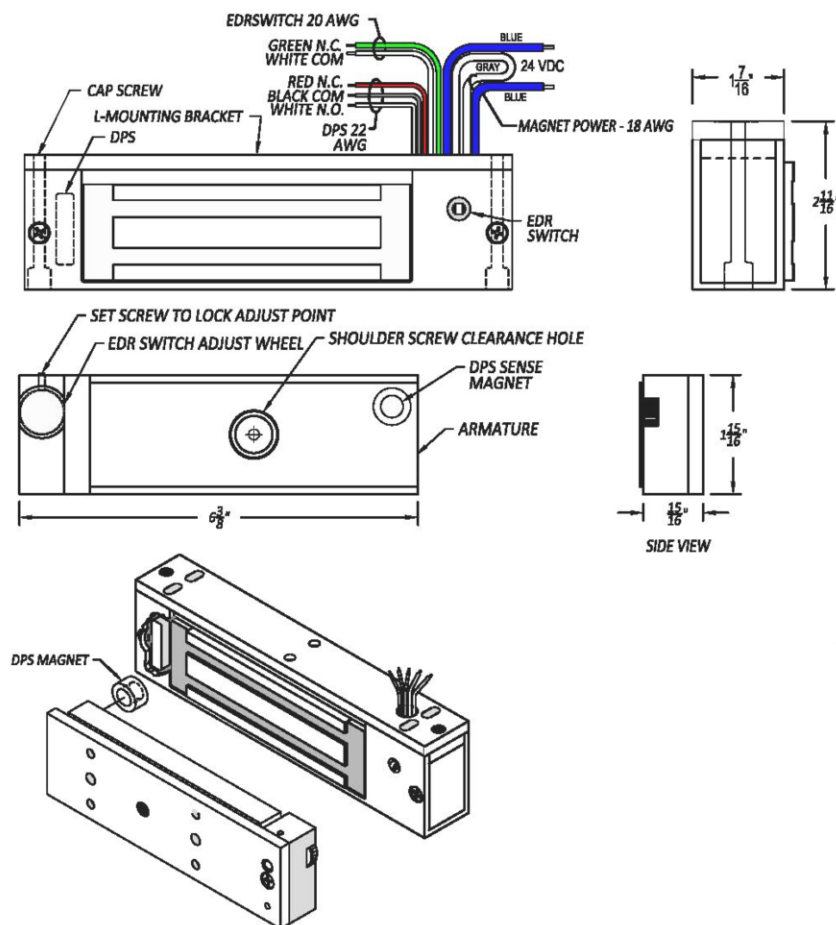
## **Extended Service:**

The rugged all metal design and durable construction ensures unlimited lock and unlock cycles without electrical fatigue or mechanical breakdown. Our locks are manufactured to the most stringent quality control standards. This allows Dortronics to offer a ***Lifetime limited warranty*** on all 1107 Series electromagnetic locks.



**DORTRONICS  
SYSTEMS, INC.**

# 1107xEDR DELAYED EGRESS ACTUATING LOCKS



## Specifications:

### Models

1107xEDR - Single Door standard  
Outswing (600 lbs.)

TJ1107xEDR - Single Inswing Door  
With Z-Bracket (600 lbs.)

1195-07xEDR Inswing Conversion Kit

### Physical Size

1107xEDR Housing - 8-1/4\" long x 2-1/4\" high x 1-1/4\" deep

TJ1107xEDR Housing & Angle bracket-  
8-1/4\" long x 2-1/16\" high x 1-1/2\" deep

ETL Listed to the following standard:

UL 294  
ACCESS CONTROL  
SYSTEMS UNITS



## Electrical:

Operating voltage  
(field selectable)  
1107xEDR - 245ma @ 24 VDC  
480ma @12 VDC

Egress Actuator Switch Normally Open  
rated @ 3 amps @ 30 volts DC

Concealed Door Position Switch SPDT  
rated @ 100 Millamps @ 30 volts DC

## Finish:

1107 series locks are encased in a brushed  
Clear Anodized Aluminum housing  
Electro-magnet face and armature are  
Zinc plated for high resistance to rust and  
corrosion.

## Installation:

Typically these locks are mounted on  
outswinging doors using the Header  
mounting plate accompanying the unit.  
This mounting plate has elongated slots  
for ease of alignment and threaded holes  
for secure attachment of the lock to the  
plate. An access hole is also provided in  
the mounting plate to accommodate the  
power and control wiring to the Delayed  
Egress control panel.

The armature mounting plate attaches to  
the door surface with hardware included.  
No through bolting is required.

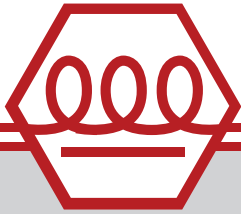
## Gate/Inswing applications:

The TJ1107xEDR units are supplied with  
an angle bracket prepared for attaching to  
the face of the door frame. Z-bracket and  
mounting hardware are also furnished for  
the mounting of the armature plate to the  
door or gate post.

**Field convert the 1107 to a TJ1107 with  
the 1195-07xEDR conversion kit**



1668 SAG HARBOR TURNPIKE, SAG HARBOR, NY 11963  
www.dortronics.com - (800) 906-0137 - (631) 725-8148 FAX



# 1107xD SLIM LINE MAGNETIC LOCKS

**NFPA 101 / BOCA  
Compatible**

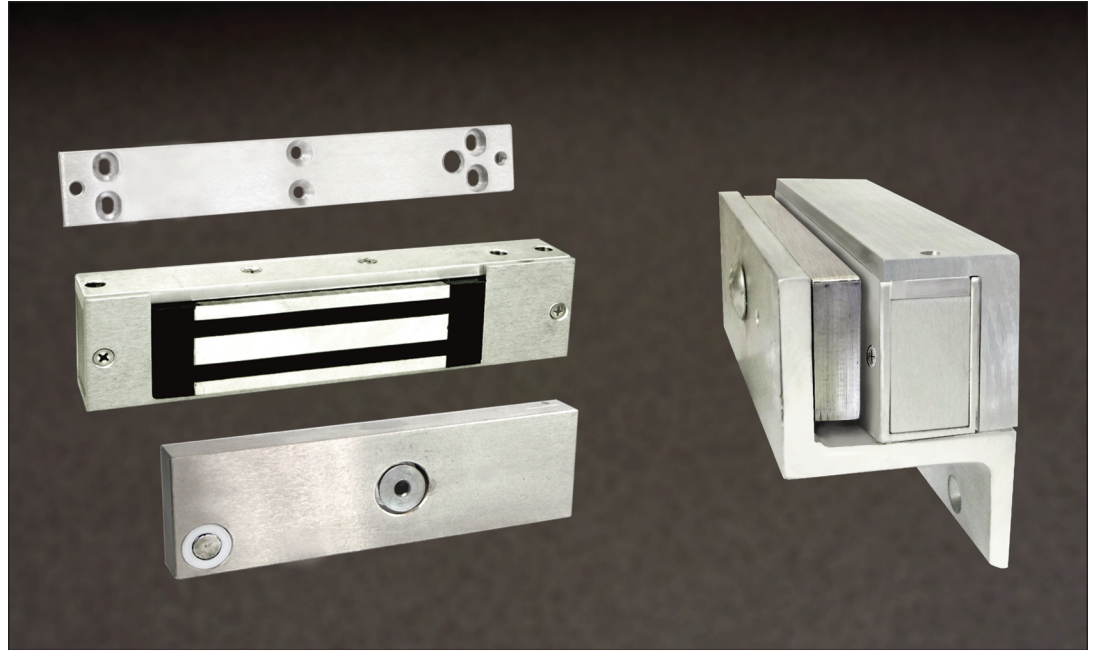
**600 Pounds of  
Holding Force**

**Shallow 1-1/4"  
Mounting Profile**

**Efficient-Low  
Current Draw**

**Certified to  
UL294  
for Access Control**

**Made in USA**



#### **Ultra Slim Profile:**

Designed to fit narrow style header applications, the 1-1/4" lock body depth greatly reduces the need for angle mounting brackets and filler plates, saving installation time and expense.

#### **Reliable & Versatile:**

This state of the art electromagnetic locking device provides positive, instantaneous door control. Models available for single outswing, inswing, and sliding doors or gates. Filler plates, angle brackets, and other mounting adapters are available to accommodate a wide range of door and frame types and conditions.

#### **NFPA Life Safety Compatible:**

Electromagnetic locking devices function independently of mechanical locks. Magnetic locks are ideal for use with fire and hazard detection systems to provide unobstructed egress upon loss of power due to an alarm condition.

#### **Concealed Door Status Switch:**

A concealed Door Position Switch is included to report door status to monitoring equipment for the detection of open Propped or Forced door conditions.

#### **Safe Operation:**

All 1107xD electro-magnetic locking devices are inherently fail-safe, releasing instantly upon command or loss of power. Both locking and unlocking are accomplished with ease and efficiency.

The well confined magnetic field of these locks allow them to be used in computer rooms and other electronically sensitive areas. The built-in Transient Surge suppression protects the electromagnet from voltage spikes.

#### **Field Convert to Inswing:**

The 1107xD Maglocks were designed to accept the 1095-07 Inswing Conversion Kit. Change from outswing to inswing door applications on site utilizing the kit which includes a Z-Bracket and angle mounting bracket complete with hardware and drilling template.

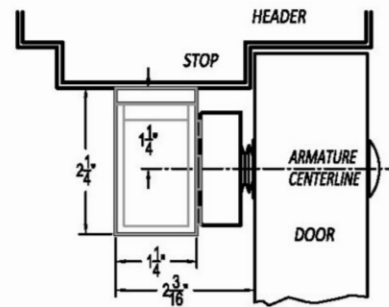
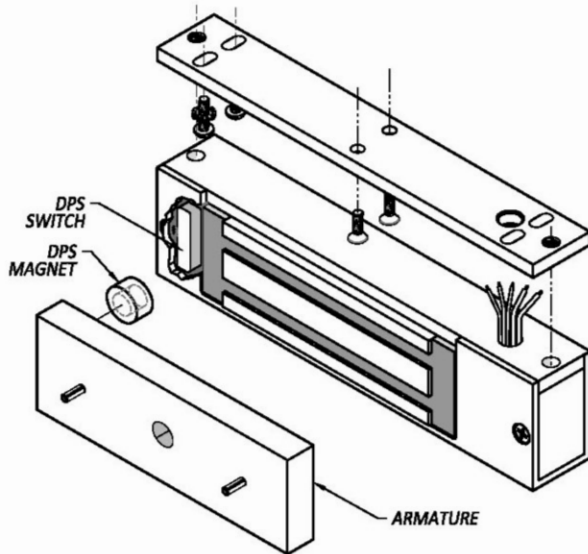
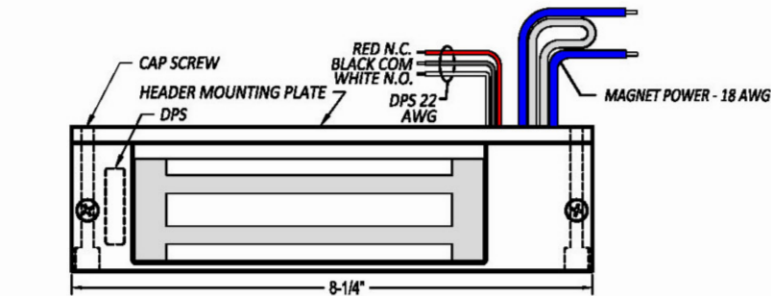
#### **Extended Service:**

The rugged all-metal design and durable construction ensures unlimited lock and unlock cycles without electrical fatigue or mechanical breakdown. Our locks are manufactured to the most stringent quality control standards. This allows Dortronics to offer a ***Lifetime limited warranty*** on all 1107 Series electromagnetic locks.

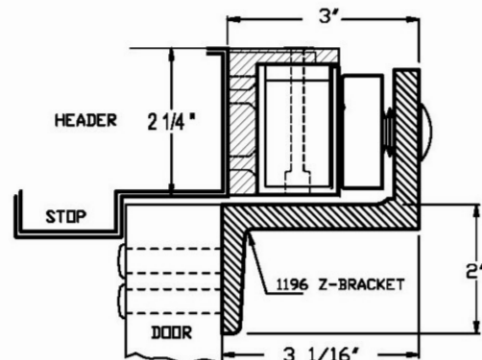




# 1107xD MAGNETIC LOCKS WITH BUILT IN DOOR STATUS SWITCH



STANDARD OUTSWINGING DOOR  
1107xD



TOP JAMB MOUNT WITH  
STANDARD INSWINGING DOOR  
TJ1107xD

## Specifications:

### Models

1107xD - Single Door standard Outswing  
(600 lbs. total)

TJ1107xD - Single Inswing Door  
With Z-Bracket (600 lbs. total)

1195-07 Inswing/Gate Conversion Kit

### Physical Size

1107xD Housing - 8-1/4" long x 2-1/4"  
high x 1-1/4" deep

TJ1107xD Housing & Angle bracket- 8-  
1/4" long x 2-1/16" high x 1-1/2" deep

ETL Listed to the following standard:

UL 294

ACCESS CONTROL  
SYSTEMS UNITS

RECOGNIZED  
COMPONENT



Intertek

## Electrical:

Operating voltage  
(field selectable)

1107xD - 245ma @ 24 VDC  
480ma @12 VDC

Concealed Door Position Switch SPDT  
rated @ 100 Milliamps @ 30 volts DC

## Finish:

1107 series locks are encased in a brushed  
Clear Anodized Aluminum housing  
Electro-magnet face and armature are  
Zinc plated for high resistance to rust and  
corrosion.

## Installation:

Typically these locks are mounted on  
outswinging doors using the Header  
mounting plate accompanying the unit.  
This mounting plate has elongated slots  
for ease of alignment and threaded holes  
for secure attachment of the lock to the  
plate. An access hole is also provided in  
the mounting plate to accommodate the  
power and control wiring.

The armature plate mounts to the door  
with thru bolting hardware provided.

## Gate/Inswing applications:

The TJ1107xD units are supplied with an  
angle bracket prepared for attaching to  
the face of the door frame. Z-bracket and  
mounting hardware are also furnished for  
the mounting of the armature plate to the  
door or gate post.

**Field convert the 1107 to a TJ1107 with  
the 1195-07 conversion kit**



1668 SAG HARBOR TURNPIKE, SAG HARBOR, NY 11963  
www.dortronics.com - (800) 906-0137 - (631) 725-8148 FAX