



1000 INDUSTRIAL MAGNETIC LOCK

**1200 Pounds
Holding Force**

**Field Selectable
Voltage 12 or 24**

**Gate Mounting
Kit Available**

**Extra Low
Current Draw**

**Inswing/Outswing
Universal Mount**



Interior or Exterior Applications

The 1000 Series electromagnetic locks can be used in harsh environments to secure doors and gates. All electronics are sealed in epoxy and are protected by the Stainless Steel housing cover. The housing, armature and exposed face of the electric lock are nickel plated to resist rust and corrosion. A rigid conduit fitting can be provided on one end of the lock to protect power wiring in gate control installations.

Fail-Safe Operation

All Dortronics electromagnetic locks are fail-safe, releasing instantly upon command or loss of power. There are no moving parts to wear, stick or bind. Without any bolt travel time or possibility of misalignment to raise concern, both locking and unlocking are accomplished with ease and efficiency.

Extended Service Life

The rugged design and durable construction of this lock assures virtually unlimited actuations without fear of electrical fatigue or mechanical breakdown. Proudly made in the USA, a *LIFETIME WARRANTY* is provided by Dortronics on all electromagnetic locks.

Universal Mounting

The standard #1000 model is supplied with an adjustable mounting plate for use on outswing doors. The #TJ-1000 unit is furnished with an angle lock mounting plate and an armature "Z" bracket for inswing door installations. Any 1000 series lock may be converted in the field for inswing door applications by adding the 1099-00 Conversion kit. An optional conduit fitted lock is available for exterior gate control applications.

Low Current Draw

All 1000 series locks can be operate on either 12 or 24 VDC. The efficient design of these locks requires only 170ma. at 24 volts DC to maintain the rated 1200 pound holding force.

The well confined magnetic field combined with the built-in spike and surge suppression system of these locks, allow integration with any access control system. Able to be controlled individually or simultaneously from one or several locations make the use of these locks ideal for securing manual or automatically operated doors and gates.

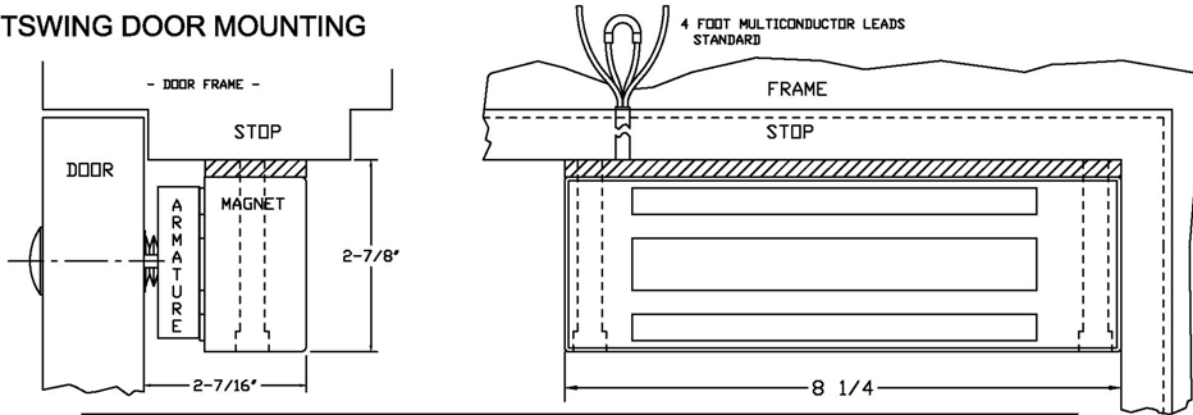


**ANSI/BHMA
A156.23**

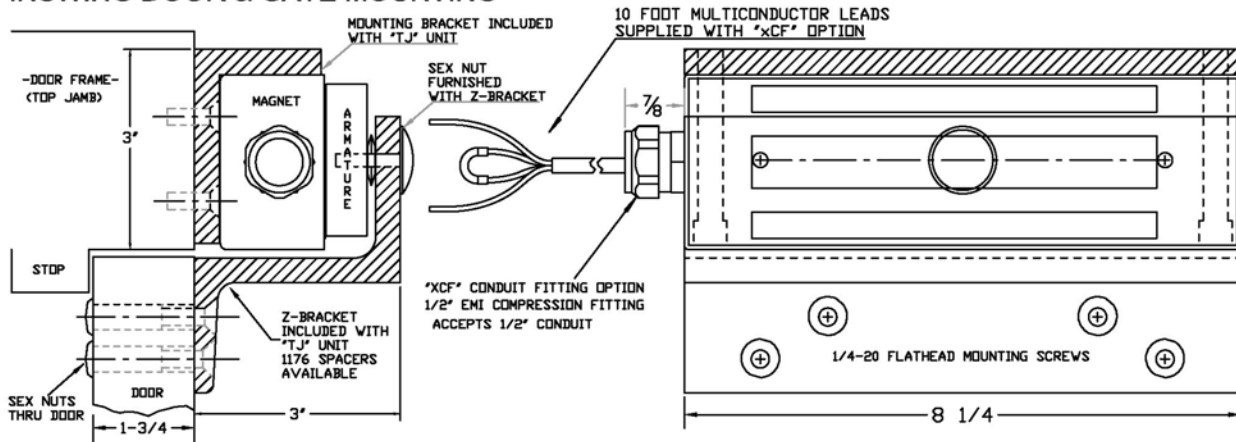
 **DORTRONICS
SYSTEMS, INC.**

1000 SERIES ELECTRO-MAGNETIC LOCKS

OUTSWING DOOR MOUNTING



INSWING DOOR & GATE MOUNTING



Specifications:

Physical Size

- #1000 Lock - 8-1/4" long x 1-1/2" deep x 2-7/8" high (includes mounting plate)
- #1000 Armature - 8-1/2" long x 2-1/4" high x 5/8" thick

Electrical

- 170mA @24 VDC
- 340mA @12 VDC
- Optional DPS Switch Contacts
- 100mA @30 VDC Max.Rated

In-swinging Doors & Gates

- TJ1000** - 1000 series lock with top jamb mounting hardware.
- 1099-00** Kit converts any 1000 to TJ1000

Options:

- xD** Integral Door Position Switch SPDT weather proof sealed
- xCF** Conduit Fitting 1/2" EMT Compression type accepts 1/2" conduit comes with 10' leads

Gate/Inswing Conversion Kit:

1099-00 Conversion kit includes (1) Z-Bracket and (1) angle bracket with all mounting hardware needed to convert a standard 1000 lock into a TJ-1000 for swinging gates or inswinging doors

Gate mounting:

1000xCF Specifies Conduit Fitting
When installing these locks on exterior swing and slide gates, #1000xCF locks should be specified to receive units with the conduit fitting. This will afford protection to the power wiring for the lock. The 1099-00 Conversion Kit may also be used for swinging gate applications.

Finish:

1000 series locks are encased in a brushed Stainless Steel housing suitable for interior or exterior applications. Electro-magnet face and armature are electroless nickel plated for high resistance to rust and corrosion.

Wiring:

The 1000 series locks are supplied with a multiconductor, 20 gauge power cable 48" long. The order in which these leads are connected to the DC power source determines the operating voltage of the unit. (xCF option comes with 10' leads)
The optional DPS switch has 3 color coded conductors.

Installation:

Typically these locks are mounted on outswinging doors using the mounting plate accompanying the unit. This mounting plate has elongated slots for ease of alignment and threaded holes for secure attachment of the lock to the plate. An access hole is also provided in the mounting plate to accommodate the power cable.
The TJ-1000 units are supplied with an angle bracket prepared for attachment to the face of the door frame. A "Z" bracket is also furnished for mounting the armature plate to the door.