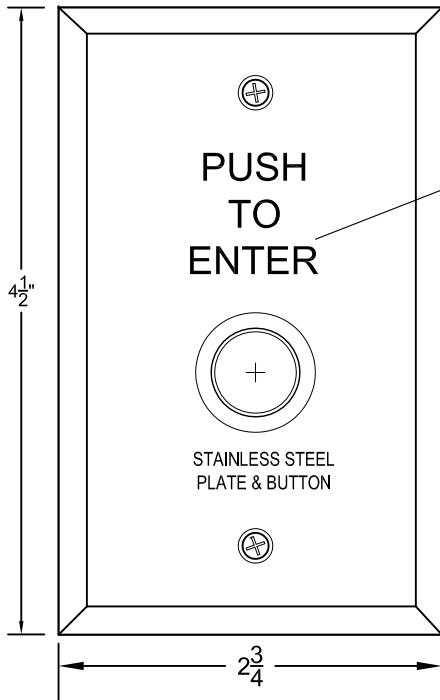
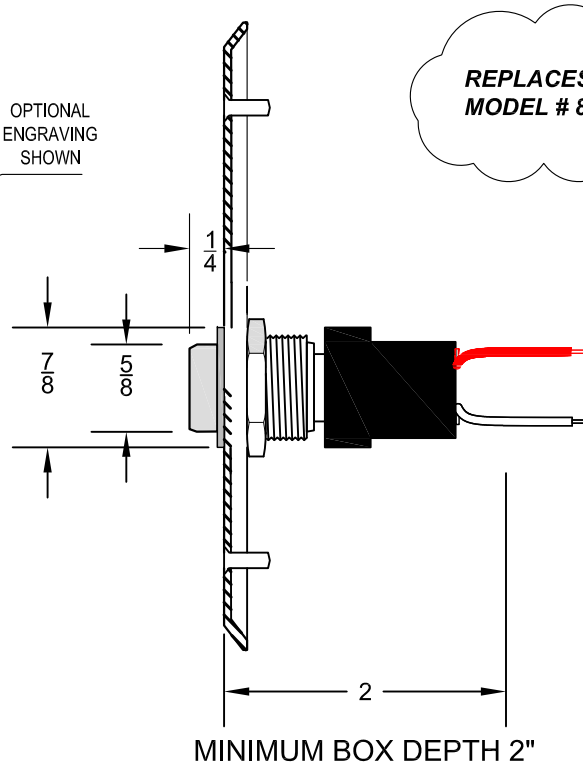


WR5276-HD22 SERIES DOOR BUTTON

HIGH IMPACT STAINLESS STEEL BUTTON
 WATER TIGHT STAINLESS STEEL BEZEL
 302 STAINLESS STEEL BACK PLATE
 INCLUDES MOUNTING GASKET FOR
 WEATHER TIGHT INTEGRITY

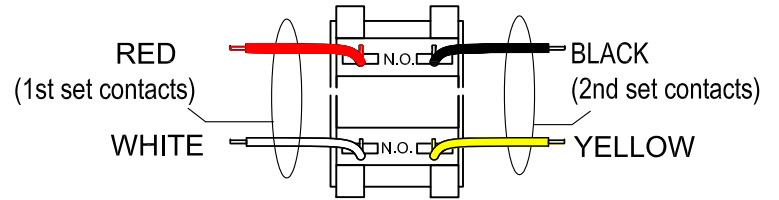


OPTIONAL ENGRAVING SHOWN

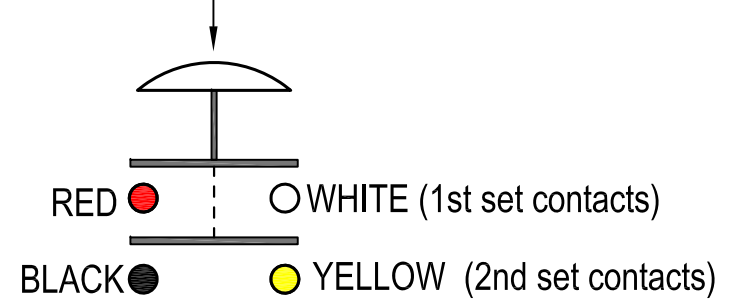


REPLACES EDWARDS MODEL # 852

BACK VIEW
 (CONTACTS SHOWN)
 6" COLOR CODED 22AWG LEADS



D.P.N.O. MOMENTARY



CONTACTS:

DOUBLE POLE NORMALLY OPEN MOMENTARY
 SWITCH RATING:
 12A @ 250VAC
 WATER PROOF
 IP66 RATED
 (Water projected against the switch from any direction shall have no harmful effects.)

	WR5276-HD22 SERIES
REV #	HEAVY DUTY WEATHER PROOF PUSH BUTTON ASSEMBLY
8/11/17	



DORTRONICS SYSTEMS, INC.

1668 Sag Harbor Tpke., Sag Harbor, NY 11963 (800) 906-0137 (631) 725-8148 Fax www.dortronics.com

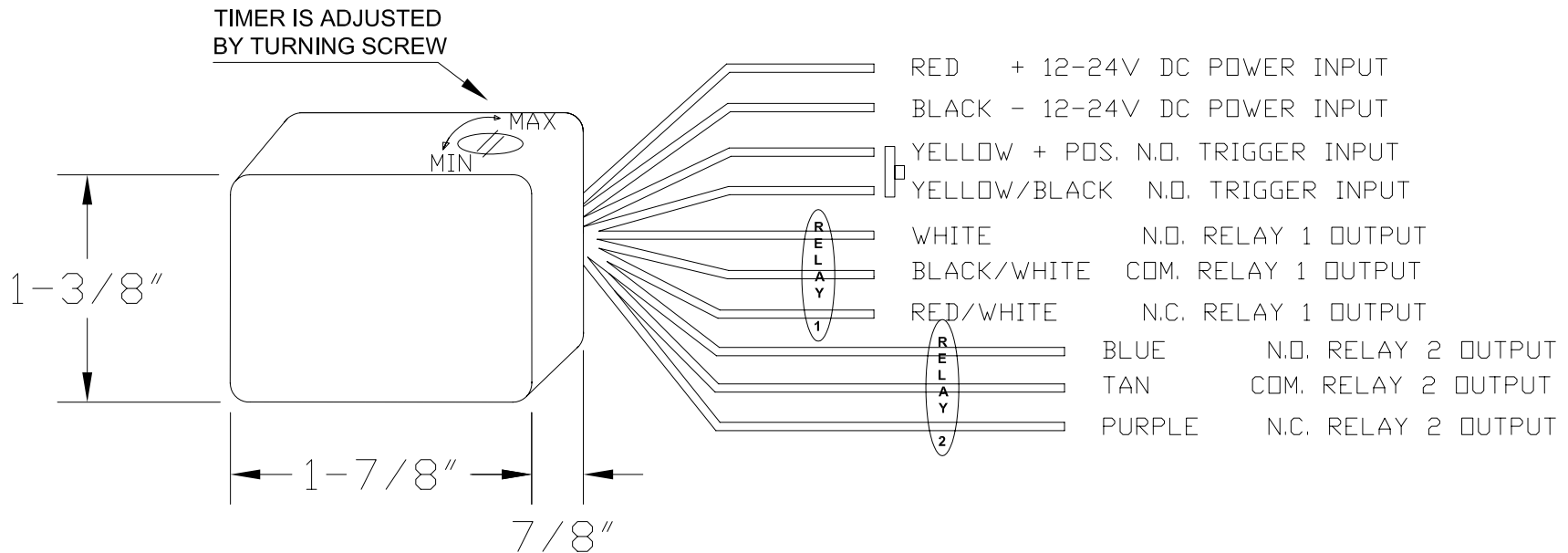
DPDT 1-60 SECOND TIMER MODULE

DWG. NO. 52800AT-06 REV. NC

ENCLOSED UNIT FOR PUSH BUTTON ELECTRONIC TIME DELAY
 GRAY ABS PLASTIC ENCLOSURE
 8" FLYING LEADS TO CONNECT TO ACCESSORY DEVICES, OR
 CONTROLLERS. UNIT IS DESIGNED TO FIT INTO A ONE GANG
 ELECTRICAL BOX WITH THE ASSOCIATED SWITCH ASSEMBLY.

ADJUSTABLE (xAT)
 FIXED 30 SECOND (xFT)

CONTACT RATING 3A @ 24VDC
 CURRENT DRAW .025 AMPS MAX.



TITLE DPDT TIME DELAY MODULE				
MATERIAL XXX			CAD FILE 52800AT-06	
FINISH XXX			SHEET 1 OF 1	SIZE A
DRAWN JTF	DATE 1/31/06	SCALE TO FIT	DWG. NO.	REV.
APPR. XXX	DATE XX/XX/XX	UNITS INCHES	52800AT-06	A

REV	REVISION DESCRIPTION	DATE