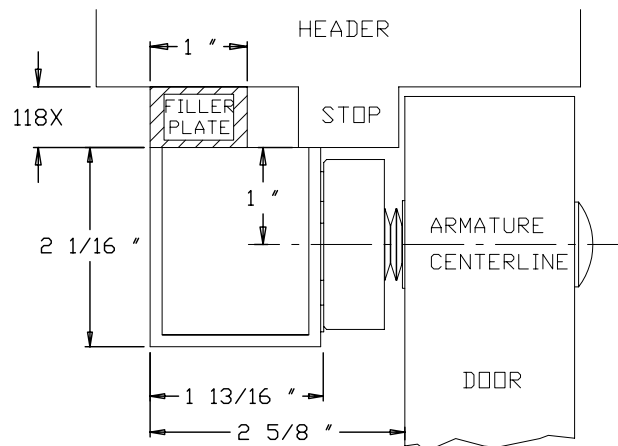


# 1180 SERIES FILLER PLATE FOR FRAME WITH NARROW STOP



## NOTES:

THE INSTALLER IS RESPONSIBLE FOR DRILLING AND TAPPING (4) MOUNTING HOLES IN THE 1180 FILLER. FACTORY MOUNTING HOLES ARE SHOWN IN DIAGRAM.

DETERMINE THE CORRECT SIZE 1180 SERIES FILLER PLATE FROM THE APPLICATION BULLETIN CROSS-SECTION.

MOUNT THE 1180 FILLER TO THE DOOR FRAME UTILIZING THE COUNTERSUNK HOLES ON THE FILLER AS A TEMPLATE.

UTILIZE THE TEMPLATE PROVIDED FOR THE APPROPRIATE LOCK TO LOCATE & DRILL ARMATURE & LOCK MOUNTING HOLES.

DRILL LOCK MOUNTING AND WIRING HOLES THROUGH FILLER AND INTO FRAME FOR PROPER RIGID LOCK MOUNTING

USE THE (2) 1/4-20 SCREWS & WASHERS PROVIDED TO MOUNT THE LOCK THROUGH THE FILLER PLATE.

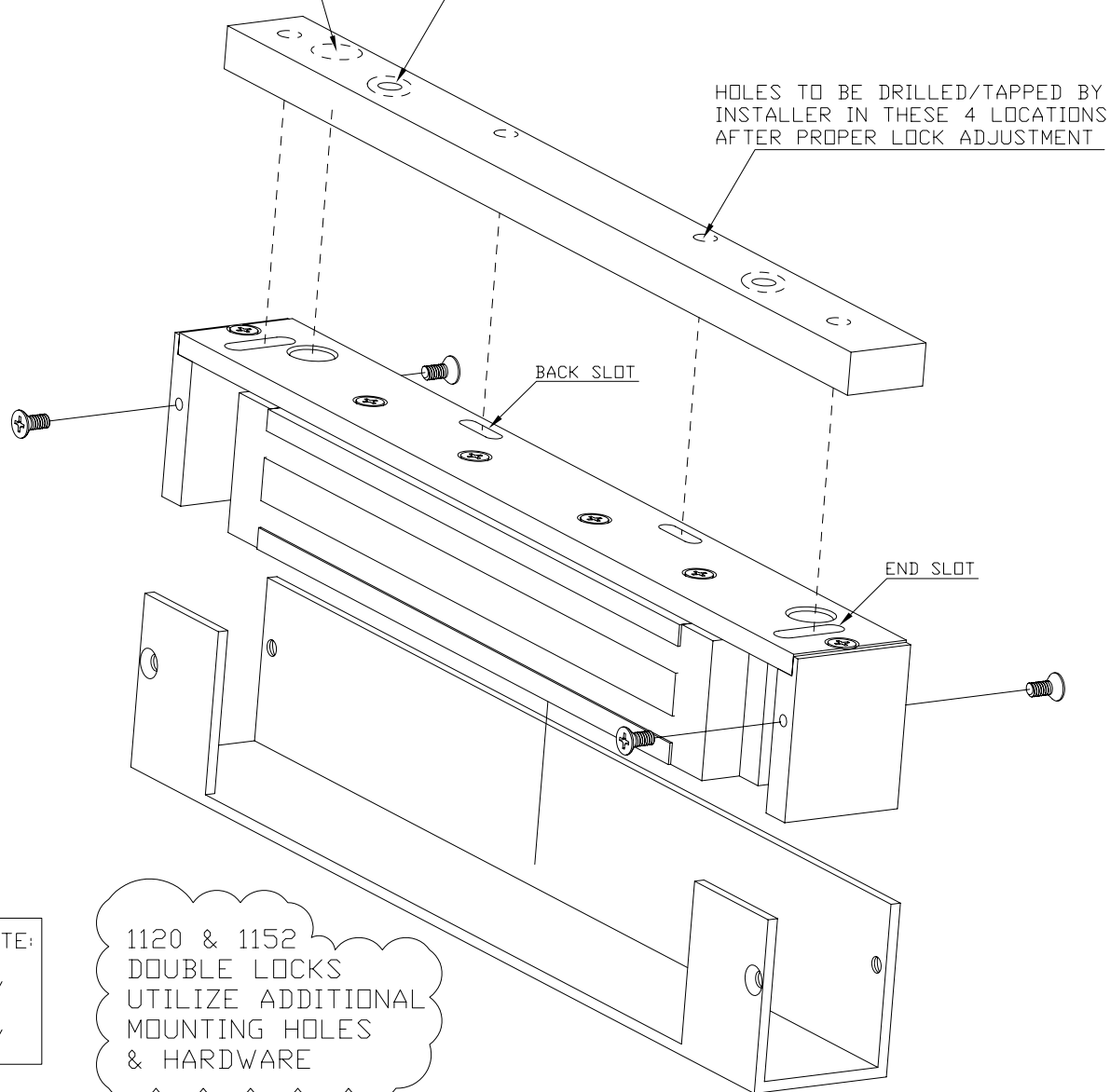
INSERT THE 2 SCREWS THROUGH THE END SLOTS ON THE MAGNET (DO NOT FULLY TIGHTEN) ADJUST THE MAGLOCK IN OR OUT FROM THE DOOR TO ENSURE THAT THE MAGNET FACE MAKES FULL CONTACT WITH THE ARMATURE PLATE FACE.

ENERGIZE THE MAGNET AND TIGHTEN THE 1/4-20 SCREWS. THEN MARK & DRILL FOR THE (2) 10-32 X 1/2" BACK MOUNTING SCREWS.

WIRING HOLE TO BE DRILLED AT EITHER END BY INSTALLER AFTER PROPER LOCK ADJUSTMENT

FACTORY DRILLED COUNTER SUNK HEADER MOUNTING HOLES

HOLES TO BE DRILLED/TAPPED BY INSTALLER IN THESE 4 LOCATIONS AFTER PROPER LOCK ADJUSTMENT



FILLER PLATE:  
THICKNESS  
1183.....3/8"  
1184.....1/2"  
1185.....5/8"

1120 & 1152  
DOUBLE LOCKS  
UTILIZE ADDITIONAL  
MOUNTING HOLES  
& HARDWARE

DATE: 08/07/06

REV: A

1180 SERIES MOUNTING  
1110 LOCK SHOWN WITH FILLER PLATE

**DORTRONICS**  
SYSTEMS, INC.  
SAG HARBOR, NY  
800-906-0137